

Deer Driftwood Wall Pedestal Assembly Instructions

Included Materials:

1. (1) Driftwood
2. (1) Pedestal Plate
3. (1) Pedestal
4. (1) #10 x 2 1/2" Screw
5. (2) #8 x 1 1/4" Machine Screw
6. (1) Hanger with Screws

Drill Hole in Skull

1. Drill Hole in Skull Using a 1/8" drill bit, drill a hole in the bottom of your skull (see Fig. 1).

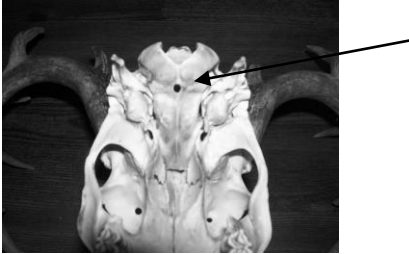


Figure 1

2. Attach Pedestal Plate to Skull

Using the #10 x 2 1/2" screw, slide the screw through the top hole in the pedestal plate and screw it into the pilot hole in the bottom of the skull. Before tightening all the way make sure the pedestal plate is square with the skull.

3. Attach Pedestal to Pedestal Plate

Using a #8 x 1 1/4" screw, slide the screw through the hole in the pedestal and screw it into the threaded insert in the bottom pedestal plate. Before tightening it all the way make sure the pedestal plate is square with the pedestal.

4. Attach Pedestal to Driftwood

Using an #8 x 1 1/4" screw, slide the screw through the hole in the driftwood and screw it into the threaded insert in the end of the pedestal.