

# “The Deer Stand” Antler Mount Assembly Instructions

## Included Materials:

1. (1) “The Deer Stand” Antler Mount

## 1. Cut Antlers Off of Skull

See Fig. 1 & 2 to see what the antlers should look like after you cut them off.

**Note:** The antlers must stay attached to each other with a small piece of the skull for the mount to work properly.



Figure 1

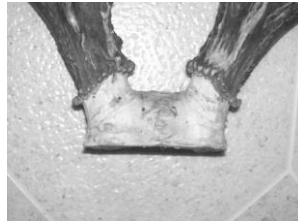


Figure 2

## 2. Hang The Deer Stand Antler Mount on the Wall

## 3. Set the Antlers on The Deer Stand

Slide the base of the antlers between the face plate and the metal bracket.

If the antlers don't fit you may have to trim the skull a little.

See Figures 3 & 4 for a complete mount.



Figure 3  
Front View



Figure 4  
Side View

Note: If the base of each antler is not symmetrical you might have to file one side a little so that the antlers will set even.