

TAXIDERMIST' WOODSHOP
1708 E SCOTT AVE
WICHITA FALLS, TX. 76301
(844)351-8800 OR (940)500-4918

sales@taxidermistwoodshop.com www.taxidermistwoodshop.com

Skull Mounting Instructions

Included Materials:

1. (1) Face Plate
2. (1) #10 x 2 1/2" Screw
3. (1) Keyhole Hanger and screws

Note: Before beginning this process pay close attention to the teeth on the skull, they are sharp and will scratch the surface fairly easy. To help, you may want to put a cloth in between the Face Plate and the teeth of your skull. Before completely tightening skull to face plate remove cloth.

1. Drill Hole in Skull

Using a 1/8" drill bit, drill a hole in the bottom of your skull (see Fig. 1).

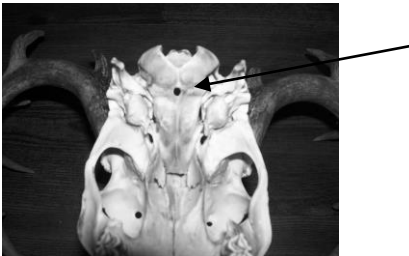


Figure 1

Note: To avoid scratching hold very firm to keep skull from spinning and scratching face plate.

2. Mount Skull to Face Plate

Drill 3/16" hole in face plate.

Using the #10 x 2 1/2" screw, slide the screw through the hole in the face plate and screw into the hole from step one. Before tightening the screw all the way, make sure the skull is straight on the plaque.