

TAXIDERMIST' WOODSHOP
1708 E SCOTT AVE
WICHITA FALLS, TX. 76301
(844)351-8800 OR (940)500-4918

sales@taxidermistwoodshop.com www.taxidermistwoodshop.com

Wall/Table Pedestal Plaque Assembly Instructions

Included Materials:

- | | |
|-------------------------------------|-----------------------------|
| 1. (1) Face Plate | 5. (1) #10 x 2 1/2" Screw |
| 2. (1) Back Plate | 6. (2) #6 x 1" Wood Screw |
| 3. (1) Pedestal | 7. (2) #6 x 1/2" Wood Screw |
| 4. (2) #8-32 x 1 1/4" Machine Screw | 8. (1) Metal Keyhole Hanger |

Note: Before beginning this process pay close attention to the teeth on the skull, they are sharp and will scratch the surface fairly easy. To help, you may want to put a cloth in between the Face Plate and the teeth of your skull. Before completely tightening skull to face plate remove cloth.

1. Drill Hole in Skull and in the Face Plate

Using a 1/8" drill bit, drill a hole in the bottom of your skull (see Fig. 1). Lay the Skull on the face plate and mark where the screw will come through and attach to skull. Now drill a 3/16" hole on the mark.

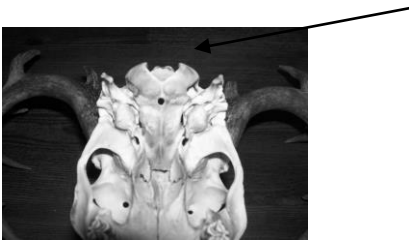


Figure 1

2. Attach Pedestal to Face Plate

Using a #8 x 1 1/4" machine screw, slide the screw through the bottom center hole in the face plate and screw it into the insert in the center of angled side of pedestal. Before tightening all the way make sure the pedestal is square with the face plate. For a wall mount have the pedestal angle toward the top of the face plate and for a table mount have the pedestal angle toward the bottom of the face plate. Once the pedestal is tightened, and in place, screw a #6 x 1" wood screw in the top hole in the center of the face plate to secure the pedestal in place.

3. Mount Skull to Face Plate

Using the #10 x 2 1/2" screw, slide the screw through the top hole in the face plate and screw into the hole from step one. Before tightening the screw all the way, make sure the skull is straight on the plaque.

Note: To avoid scratching hold very firm to keep skull from spinning and scratching face plate.

4. Attach Back Plate to Pedestal

Using a #8 x 1 1/4" screw, slide the screw through the hole in the back plate and screw it into the small pilot hole in the bottom of the pedestal. Before tightening all the way make sure the pedestal is sitting square on the back plate.